



**Champlain
Parkway
Project**



Project Overview

The Champlain Parkway Project is a 2.8-mile project that will connect I-189 to the City's south end, alleviate neighborhood traffic and transform the existing road into a two-lane multi-modal roadway.

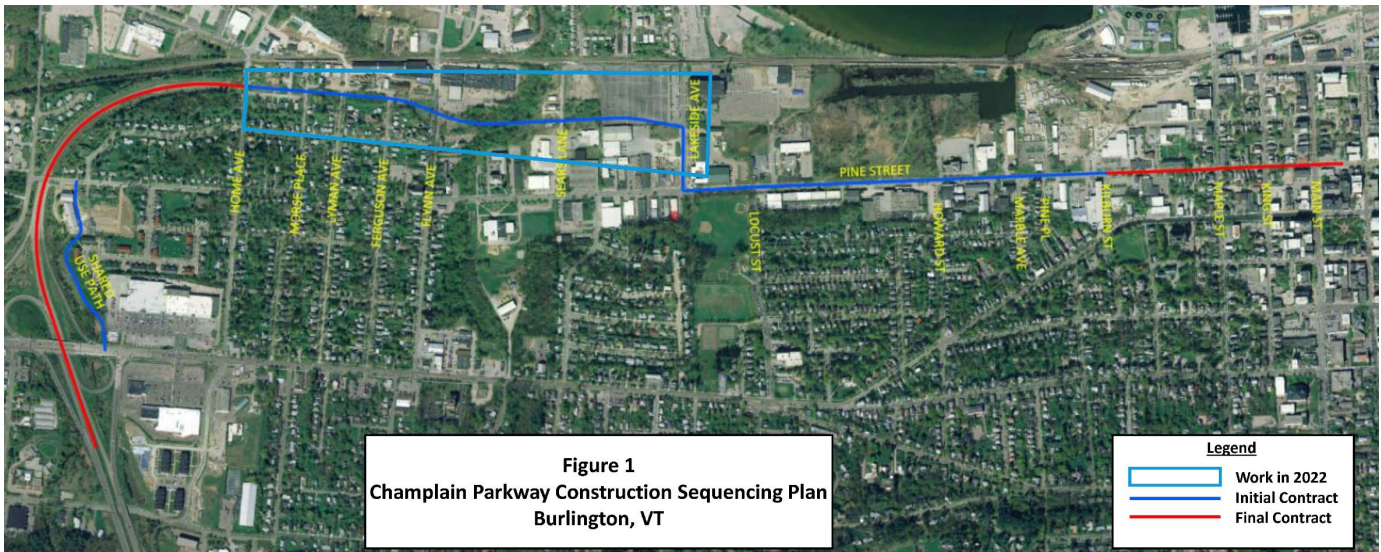
The full project includes the construction of the Champlain Parkway from the existing I-189 near its intersection with U.S. Route 7 to Lakeside Avenue and the section of Pine Street between Lakeside Avenue to Main Street. The project will be constructed as two contracts, named the **Initial Contract** and the **Final Contract**, as shown in the graphic below.

The **Initial Contract** is underway and will be completed this fall 2024. The work includes the construction of the Champlain Parkway from Home Avenue to Lakeside Avenue and upgrades to Lakeside Avenue and

the section of Pine Street between Lakeside Avenue and Kilburn Street.

The **Final Contract** has been advertised for contractor bid with contractor award anticipated for late summer and construction start in late fall 2024. The work includes the construction of the final portion of the Champlain Parkway between I-189 and Home Avenue and the rehabilitation and upgrade of Pine Street between Kilburn Street and Main Street through the Maple/King Neighborhood.

The Champlain Parkway Project is anticipated to be completed in 2026.



champlainparkway.com

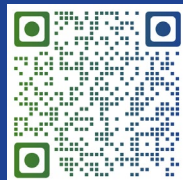
Visit the Website

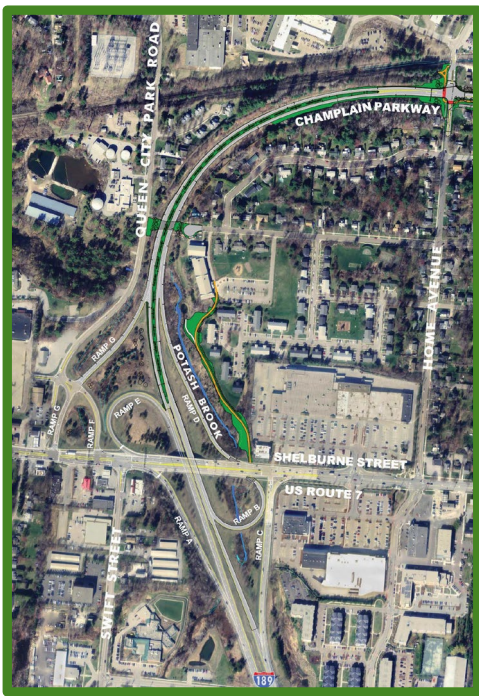
Sign Up for Updates

Contact the Project Team:

info@champlainparkway.com

802-496-8956





Rendering of the Champlain Parkway between Home Avenue and I-189.



Rendering of the project improvements along Pine Street between Kilburn Street and Main Street.

Construction Schedule and Impacts:

- **Final Construction Contract Start:** Fall 2024
- **Final Construction Contract Completion:** 2026
- **Schedule:** Crews will begin constructing the Champlain Parkway with Pine Street construction activities anticipated starting in 2025.
- **Impacts:** Pine Street will experience temporary traffic and pedestrian detours during active

Maple/King Neighborhood

Multi-modal Improvements:

The Project will improve safety for pedestrians and cyclists by:

- Prioritizing pedestrians with an exclusive crossing phase
- Rebuilding sidewalks and curb ramps to ADA standards
- Adding curb extensions (bulb-outs) to slow traffic, increase pedestrian visibility and shorten crossing distances
- Creation of a separated bike lane on Pine from Kilburn to Maple
- On-road bicycle accommodations, bike box for visibility when turning

Traffic Improvements:

The Project will improve traffic flow along Pine Street by:

- Reducing truck traffic on Maple Street
- Upgrading the 4-way stop at King and Maple to signal-controlled intersections
- Synchronizing traffic signals to optimize traffic flow
- Promoting throughway traffic, reducing turn movements onto King and Maple
- Creating a safer corridor for everyone by providing signal preemption for emergency vehicles and prioritization for transit

MYTH: This project will increase traffic through the King and Maple neighborhood worsening conditions for pedestrians and cyclists.

FACT: While the traffic model on Pine St from Kilburn to Maple estimates an increase of ~9% after construction and interstate connection, installing signalized intersections at King and Maple with exclusive pedestrian phases will improve the user experience and level of service. Additionally, the bumpouts shorten pedestrian crossings and bike boxes bring attention to and provide some additional accommodations for the multiple modes of transportation in the neighborhood.