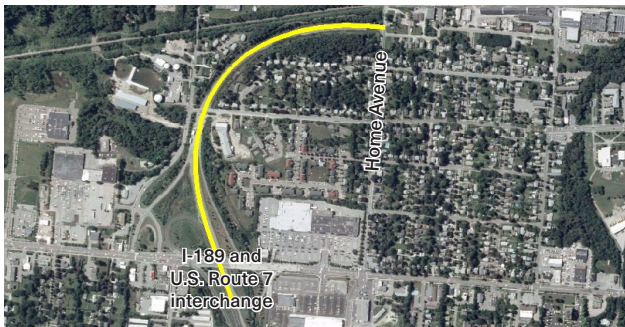


SAAMAYNTA TARAAFIKADA IYO HORMARINTA

Champlain Parkway waxay hormarin doontaa wareegga taraafikada iyo gooni u goosadka maxalliga iyo taraafikada ee koonfur-galbeed ee Burlington. Champlain Parkway ayaa sidoo kale yareyn doonta isu socodka baabuurta ee wadooyinka maxalliga ah ee aagga mashruuca. Mashruucu wuxuu ku dari doonaa calaamadaha taraafikada wuxuuna casriyeyn doonaa calaamadaha jira; Calaamadahaas waa la iswaafajin doonaa si loo wanaajiyo habka taraafikada ee u kala qulqulaya aagga.

Calaamadaha cusub iyo kuwa la cusboonaysiiyay ayaa sidoo kale ku jiri doona mudnaanta digniinta transit iyo horudhaca baabuurta degdegga ah, u oggolaanshaha basaska iyo gawaarida degdegga ah inay ku dhex maraan aagga iyaga oo aan sugin nalalka wadooyinka.

Aaga isgoyska



AAGA ISGOYSKA laga bilaabo I-189 / U.S. Route 7 Interchange ilaa Home Avenue, Champlain Parkway waxay raaci doontaa kuwa hadda jira, roadway iyo neck down ilaa wadada magaalada.

AAGA PARKWAY (Home Avenue ilaa Lakeside Avenue), waxay noqon doontaa wado cusub 25-mph waddo magaalada ah oo leh hal haad dhinac walba iyo wadiiqooyinka bidix ee isgoysyada. Waxaa jiri doona calaamadaha taraafikada wadada Avenue, Flynn Avenue, Sears Lane, iyo Lakeside Avenue.



Flynn Avenue Ilaa Sears Lane

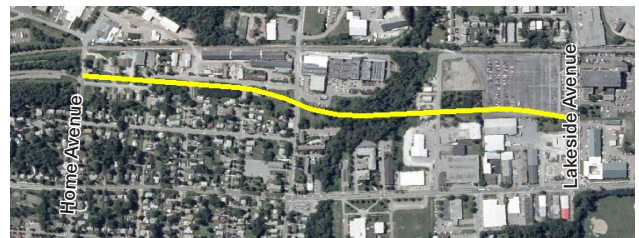


Howard Street Iyo Pine Street



Kilburn Street Iyo Pine Street

Aaga Parkway



Champlain Parkway Project
Burlington, VT





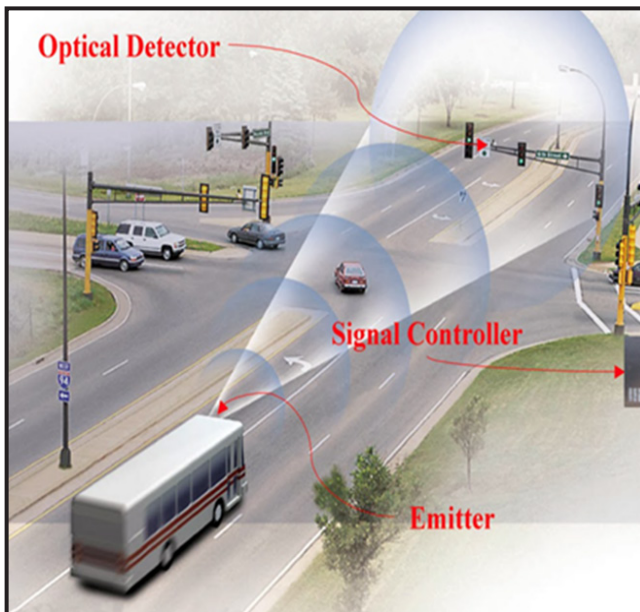
Jidka **ON-ROAD** ee wadada Lakeside Avenue ilaa wadada weyn, Champlain Parkway wuxuu raacayaa wadooyinka magaalada ee hada jira.

Xaafadaha **MAPLE IYO KING STREET**, taraafikada ayaa si xor ah u qulquli doonta. Calaamadaha cusub waxaa lagu rakibi doonaa isgoysyada Pine Street oo leh King Street iyo Maple Street. Digniinka ka jira isgoyska Pine Street iyo Main Street waa la cusbooneysiin doonaa. Dhammaan calaamadaha waxaa ka mid noqon doona wejiga WALK ee lugta leh gaar ahaaneed, mudnaanta Wajiga, calaamadda gaadiidka, iyo kahortaga baabuurta gurmadka ah.

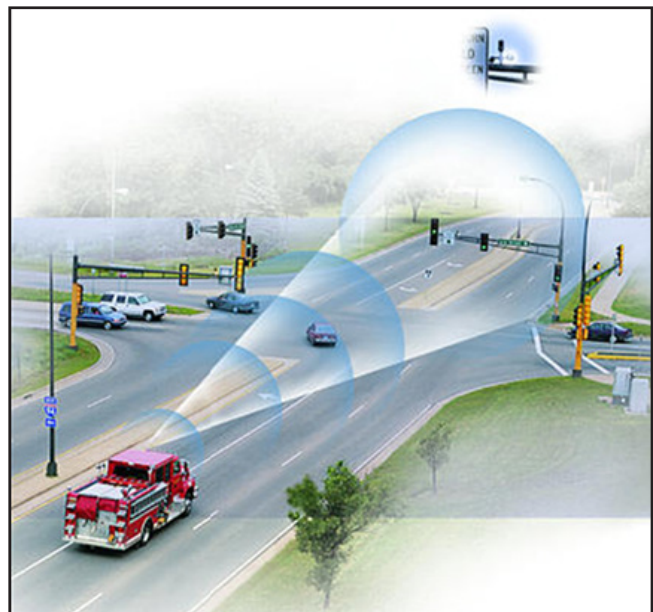
Bike view oo u dhow Maple Street



MUDNAANTA CALAAMADAHA GAADIIDKA



GAWAARIDA GURMADKA



Champlain Parkway Project
Burlington, VT



U.S. Department of Transportation
Federal Highway Administration



TIRADA TARAAFIKADA

Champlain Parkway wuxuu yareyn doonaa mugga taraafikada meelaha qaarkood wuxuuna ku kordhin doonaa kuwa kale. Si kastaba ha noqotee, xitaa halka ay gaadiidku ku sii kordhayaan, qulqulka taraafikada ayaa la wanaajin doonaa isgoosyadana sifiican ayey u shaqeyn doonaan. Shabakada Wadada ayaa sifiican ushaqeyn doonta waxaana ka dhalan doona saameyn guud oo cabaarayso dhammaan aagga daraasadda.

MUGA BULUUGA AH

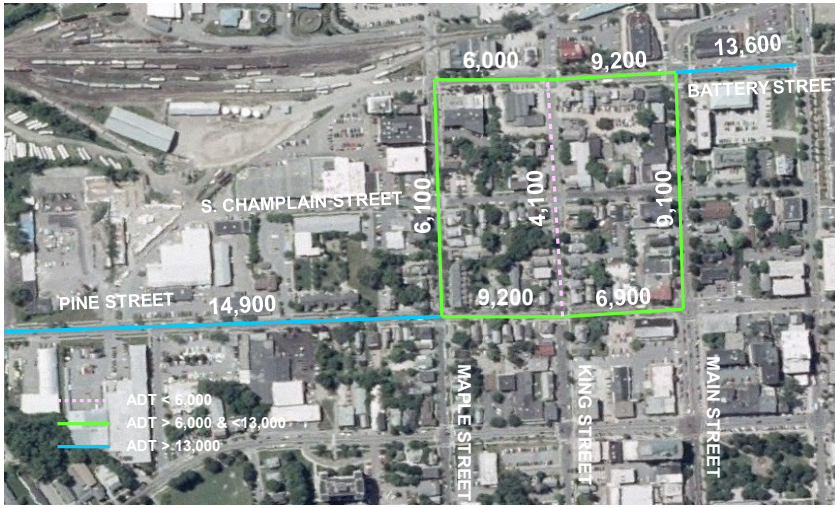


DHIS MUG



CABBIRKA GAWAARIDA WADOOYINKA EE MAPLE IYO KING STREET

MUGA BULUUGA AH



Mashruuca Champlain Parkway wuxuu dib-u-dheellitiri doonaa taraafikada xaafada ee Maple iyo King Street, wuxuu ku hagayaa taraafikada Pine Street. Pine Street waa waddo halbowle ah oo loogu talagalay in lagu maareeyo qulqulka taraafikada. Keenista gawaarida badan Pine Street waxay ka saari doontaa baabuurta xaafadaha u dhow iyo wadooyinka la degan yahay.

DHIS MUG




In kasta oo ay ka jiri doonaan gaadiid badan maalin kasta Pine Street, isgoysyada Pine Street, King Street iyo Maple Street ayaa sifiican u shaqeyn doona. Hawlgalladaan hagaagaya waxay yareyn doonaan saameynta taraafikada.


Isku-xidhka guud ee taraafikada ayaa sifiican u shaqeyn doona, taasoo horseedaysa in la hormariyo qulqulka taraafikada

Gudbi faallooyinka:
Luuliyo 10 – Agoosta 24,2020

 www.champlainparkway.com

 info@champlainparkway.com

 Champlain Parkway LS DSEIS
c/o Susan Molzon
Burlington DPW
645 Pine Street
Burlington, VT 05401

 802.496.8956

